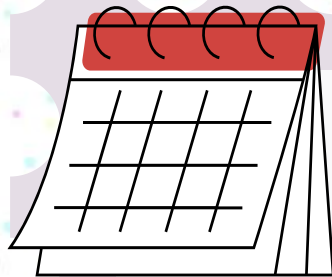


## SPRING TERM



06.01.25 - School opens ~ 8:50 a.m.

22.01.25 - Year 1 trip to Harlow Carr

30.01.25 - KS1 Parent Stay and Read Session ~ 8.45 - 9.15 a.m.

03.02.25 - Children's Mental Health Week begins

14.02.25 - SCHOOL CLOSSES ~ 3:20 p.m.

---

24.02.25 - School opens ~ 8:50 a.m.

07.03.25 - World Book Day

13.03.25 - KS1 parent Stay and Read Session ~ 2.45 - 3.15 p.m.

18.03.25 - Parent/ Teacher Consultations ~ 3:30 p.m. - 7.00 p.m.

20.03.25 - Parent/ Teacher Consultations ~ 3:30 p.m. - 7.00 p.m.

21.03.25 - World Poetry Day

04.04.25 - SCHOOL CLOSSES ~ 2:20 p.m. (NO HIVE)



Technology



Natural World



Diversity



Values

## Our Curriculum Drivers

We are excited to share what we have planned for this term in Key Stage 1! Our theme this term will revolve around the natural world, prompting our young learners to explore the question, "What can I find in my garden?" Through our science lessons, we will focus on plants, while our art projects will encourage the children to appreciate and recreate the beauty of nature around them.

In Year 1, students will be delving into the world of sculpture, inspired by the works of Andy Goldsworthy. Meanwhile, Year 2 will develop the skills necessary to produce a delightful landscape painting depicting our local area. In maths, we will continue to build on the foundations laid in the Autumn term. Year 1 will explore numbers up to 50, deepening their understanding of place value.

Year 2 will also focus on place value, as well as mastering addition and subtraction before progressing to multiplication and division. In English, Year 1 will work on using the conjunction "and" to extend their sentences, along with exploring the use of adjectives. Year 2 will venture into instructional writing and create their own short fictional stories. Finally, in history and geography, we will focus on developing the children's locational knowledge and understanding of our local community.

You can find lots more detail about our learning on the school website, where we have shared our Long-Term Plan for the year, along with our Medium-Term Plans for Spring 1 and Spring 2.

### REMEMBER!

Please encourage your child to ensure their iPad is fully charged each day.



### Distinguished School

Recognised by Apple as a distinguished school for continuous innovation in learning, teaching, and the school environment.

# Teaching Staff



Miss Ward  
Year 2  
KS1 Leader



Miss Wray  
Year 1



Ms Smith  
Year 2



Miss Herfield  
Year 1

# Support Staff



Miss Spencer  
HLTA



Mrs Stephenson  
HLTA



Mr Robinson  
HLTA



Mrs Vardy  
LSA



Miss Laurence  
LSA



Miss O'Connor  
LSA



Mrs Hughes  
LSA



Miss Mogg  
LSA



Mrs Reilly  
French



Mrs Gwilliam  
Music



Mrs Carlyon  
LSA

## COSTS

### Year 1 Harlow Carr – £3

This is a voluntary contribution and your child will be treated no differently in the event a payment is unable to be made.

Information on this trip to follow in due course.

## HOME LEARNING

You'll find guidance on our website regarding things you can do at home to support your child's learning.

If you need a reset of your Parent Access Showbie Code, please contact your child's class teacher.

## P.E.

Y1 – Wednesday afternoon.

Y2 – Tuesday morning (Sporting Influence Coaching).

Your child should come to school wearing their P.E. kits on these days.

## SWIMMING

### Y2 ONLY

Additional information regarding swimming will be sent out half way through the Autumn term.

Please refer to the letter sent in July regarding session dates for your child's class.